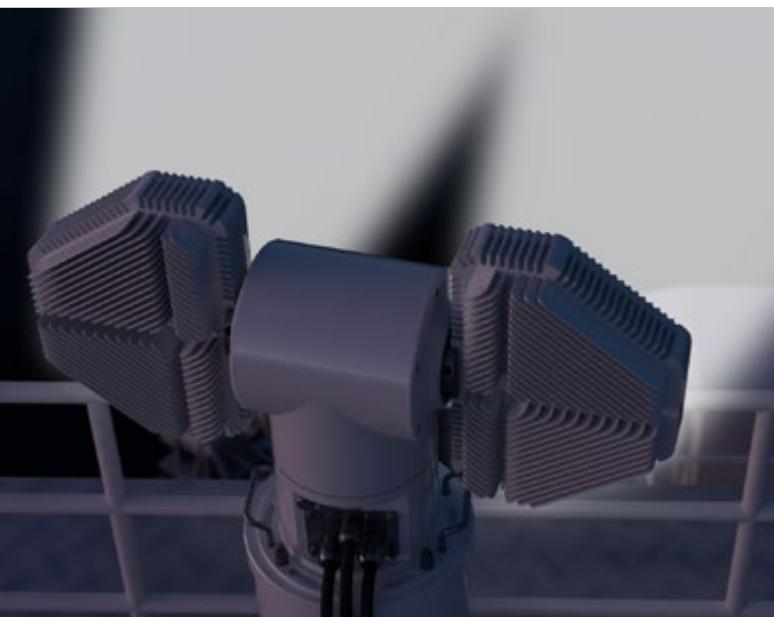


# Precision & Power





**WISKA**   
make power smile

**MAC**  
Marine Lighting & Technologies


DEALER : MAC MARINE s.r.l.  
Ponte Colombo  
16126 Genova Porto - Italy  
Tel. +39 010 2465300 Fax +39 010 8690338  
P.IVA / VAT Nr. IT 02324760996  
Email: [info@marinecomponents.it](mailto:info@marinecomponents.it)




# Illuminate the Future


We are proud to announce the launch of a new state-of-the-art searchlight – the WISKA LED Searchlight.

This searchlight exemplifies our commitment to high-end quality, performance, and durability, addressing the growing demand for modern LED lighting solutions in the maritime sector.


- 


High Protection
- 


LED
- 


Floodlight max. Wattage
- 

Aluminium / Stainless Steel
- 

Dual Purpose Floodlight / Searchlight
- 

Pan/Tilt
- 

Remote Control
- 

Boost Feature
- 

System Lifetime 20,000 h



DEALER : MAC MARINE s.r.l.  
 Ponte Colombo  
 16126 Genova Porto - Italy  
 Tel. +39 010 2465300 Fax +39 010 8690338  
 P.IVA / VAT Nr. IT 02324760996  
 Email: info@marinecomponents.it

# Brighter seas, better Efficiency

Designed to meet the rigorous demands of shipowners and managers, the LED Searchlight offers significant power savings and CO<sub>2</sub> emission reductions, enhancing operational efficiency.

With its high lumen output, the searchlight ensures bright and clear illumination, vital for safe and effective maritime operations.

The LED Searchlight features dual functionality, allowing users to switch seamlessly between searchlight and floodlight modes using a remote control unit.

The booster and scan functions further enhance visibility and safety during critical operations, while the pan/tilt unit offers endless rotation and variable speed control for comprehensive coverage and flexibility.



## Engineered for Endurance

Engineered to withstand the toughest maritime conditions, the LED Searchlight is IP66 / 68 rated, ensuring robust protection against water and dust ingress.

Its powder coated stainless steel housing provides exceptional durability and corrosion resistance, making it a reliable choice for maritime environments.

The searchlight operates efficiently across a wide temperature range from -25 °C to 45 °C, guaranteeing reliable performance regardless of environmental conditions.



# Performance you can Count on

The technical specifications of the WISKA LED Searchlight are impressive.

It features a light colour of 5,000 K, with a power output of 2 x 100 W for the searchlight mode and 2 x 145 W for the floodlight mode.

The light intensity reaches an astounding 2 x 1,700,000 cd in searchlight mode, with a luminous flux of 2 x 8,000 lm for the searchlight and 2 x 18,000 lm for the floodlight, ensuring unparalleled illumination.



## Master your Light: The ultimate Remote Control Unit

The LED Searchlight is complemented by an advanced remote control unit designed to maximise functionality and ease of use.

This intuitive remote control unit allows operators to seamlessly switch between searchlight and floodlight modes and activate advanced features such as the booster, scan and morse functions. With the home position function, the searchlight can automatically return to a predetermined position, ensuring optimal readiness at all times. The endless rotation capability, controlled through the pan/tilt unit, provides unparalleled flexibility and precision in beam positioning.

Additionally, the remote control unit can be set up and configured to meet specific user requirements, offering a tailored lighting solution for every maritime application.





# Lighting the Way to a Greener Future

Beyond the evident benefits of power savings and reduced CO<sub>2</sub> emissions, the WISKA LED Searchlight also addresses critical sustainability goals.

It minimises hazardous waste, such as mercury lamps, and reduces maintenance requirements, offering long-lasting performance with minimal upkeep.

The high reliability of the searchlight ensures consistent and dependable illumination during vital maritime operations, making it a sustainable and practical choice.

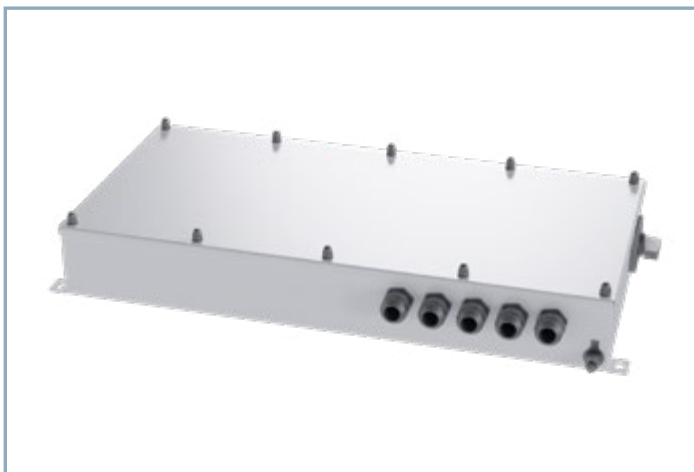
# LED Searchlight



## LED Searchlight (SD-2x145)

IP66 / 68 (0.2 bar 30 min.), aluminium LED module and stainless steel pan/tilt unit, 2 x 100 W searchlight / 2 x 145 W floodlight, light intensity 2 x 1,700,000 cd, luminous flux 2 x 8,000 lm searchlight / 2 x 18,000 lm floodlight, colour temp. 5,000 K, CRI > 70, temperature range -25 °C to 45 °C, system lifetime 20,000 hours, weight 27.5 kg

Dimensions: 690 x 430 x 240 mm (searchlight)



## Ballast Unit (PSUD)

IP66 / 67, stainless steel, max. 600 W, 230 V AC, surge protection 4 kV, temperature range -25 °C to 45 °C, system lifetime 50,000 hours, weight 10.0 kg

Dimensions: 650 x 340 x 60 mm



## Remote Control Unit (RCU-E-S/RCU-A-S)

IP66, dimmable background illumination, suitable for multiple searchlight control, speed control with joystick, scan function, boost function, morse function, display of searchlight direction, adjustable settings, UV resistant surface

Dimensions: 210 x 130 x 60 mm

## About WISKA

Founded in Hamburg in 1919, we are today one of the leading manufacturers of electrical equipment, lighting products and CCTV video surveillance for electrical trade, industry and shipbuilding. We operate our own research and development facilities and production plants next door at our headquarters in Germany. Our global sales network of representatives and subsidiaries ensure a quick and personal on-site customer service for you. The WISKA Group today employs over 310 people worldwide.