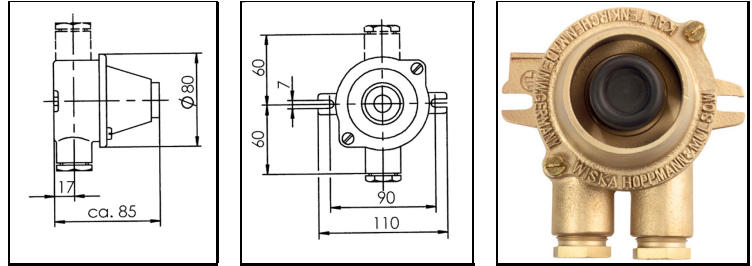


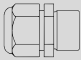

Push /signal buttons

Druck- /Signalaster




Voltage: 230 V
Protection class to EN 60 529: IP 56
Material: Brass/red brass
Equipment: Cable entries M 24 x 1,5/Z14
Kind of current: AC
Current intensity: 16 A
Buttons: · Push button, 2-pole:
 AR = 1 closing contact, 1 breaking contact (10A)
 AA = 2 closing contacts
 RR = 2 breaking contacts
Variations: · .../red = Push button red
 · .../green = Push button green
 · Third switching level

Spannung: 230 V
Schutzart gemäß EN 60 529: IP 56
Material: Messing/Rotguss
Ausstattung: Kabeleinführungen M 24 x 1,5/Z14
Spannungsart: AC
Stromstärke: 16 A
Taster: · Drucktaster, 2-polig:
 AR = 1 Schließer, 1 Öffner (10A)
 AA = 2 Schließer
 RR = 2 Öffner
Varianten: · .../rot = Druckknopf rot
 · .../grün = Druckknopf grün
 · Dritte Schaltebene

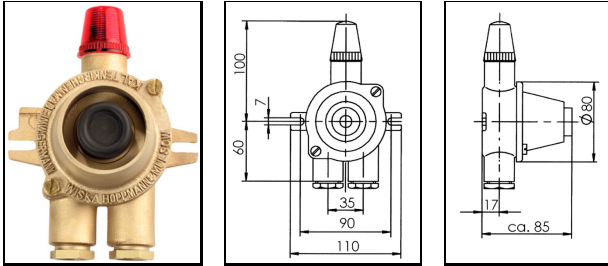
Type		
720/AR	⊙	0,9
720/2/AR	⊙	0,9
720/D/AR	⊙	0,9
720/AA	⊙	0,9
720/2/AA	⊙	0,9
720/D/AA	⊙	0,9
720/RR	⊙	0,9
720/2/RR	⊙	0,9
720/D/RR	⊙	0,9

Spare parts / Accessories

Ersatzteile / Zubehör

Type	Description	Produktbeschreibung	
AR 22,5/7	Push button interior, 1 closing contact, 1 breaking contact, Ø 22,5 mm, 2-pole, 16A	Druckstastereinsatz, 1 Schließer und 1 Öffner, Ø 22,5 mm, 2-polig, 16A	0,1
AA 22,5/7	Push button interior, 2 closing contacts, Ø 22,5 mm, 2-pole, 16A	Druckstastereinsatz, 2 Schließer, Ø 22,5 mm, 2-polig, 16A	0,1
RR 22,5/7	Push button interior, 2 breaking contacts, Ø 22,5 mm, 2-pole, 16A	Druckstastereinsatz, 2 Öffner, Ø 22,5 mm, 2-polig, 16A	0,1

Push/signal buttons with control light



Voltage: 230 V

Protection class to EN 60 529: IP 56

Material: Brass/red brass

Equipment: - Cable entries M 24 x 1,5/Z14
- Control light E 14, red, with glow lamp for 230V

Kind of current: AC

Current intensity: 16 A

Buttons: - Push button, 2-pole:

AR = 1 closing contact, 1 breaking contact (10A)

AA = 2 closing contacts

RR = 2 breaking contacts

Variations: - 24V DC, 1,5A

- Third switching level

- .../ green 24V = control light E 14, green, with glow lamp for 24V

- .../ green 230V = control light E 14, green, with glow lamp for 230V

Druck-/Signaltaster mit Kontrollleuchte

Spannung: 230 V

Schutzart gemäß EN 60 529: IP 56

Material: Messing/Rotguss

Ausstattung: - Kabeleinführungen M 24 x 1,5/Z14
- Kontrollleuchte E 14, rot, mit
Glimmlampe für 230V

Spannungsart: AC

Stromstärke: 16 A

Taster: - Drucktaster, 2-polig:

AR = 1 Schließer, 1 Öffner (10A)

AA = 2 Schließer

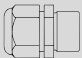
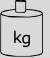
RR = 2 Öffner

Varianten: - 24V DC, 1,5A

- Dritte Schaltebene


- .../grün 24V = Kontrollleuchte E 14, grün, mit Glimmlampe für 24V

- .../grün 230V = Kontrollleuchte E 14, grün 230V

Type		
721/AR	⊙	1,0
721/AA	⊙	1,0
721/RR	⊙	1,0

Spare parts / Accessories

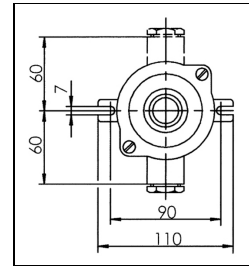
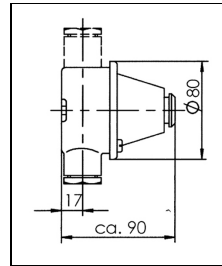
Ersatzteile / Zubehör

Type	Description	Produktbeschreibung	
AR 22,5/7	Push button interior, 1 closing contact, 1 breaking contact, Ø 22,5 mm, 2-pole, 16A	Druckstereinsatz, 1 Schließer und 1 Öffner, Ø 22,5 mm, 2-polig, 16A	0,1
AA 22,5/7	Push button interior, 2 closing contacts, Ø 22,5 mm, 2-pole, 16A	Druckstereinsatz, 2 Schließer, Ø 22,5 mm, 2-polig, 16A	0,1
RR 22,5/7	Push button interior, 2 breaking contacts, Ø 22,5 mm, 2-pole, 16A	Druckstereinsatz, 2 Öffner, Ø 22,5 mm, 2-polig, 16A	0,1

For the wide range of Cable glands and accessories for all applications please look at the catalogue "WISKA INDUSTRY"
Das umfangreiche Sortiment an Kabelverschraubungen und Zubehör für alle Einsatzbereiche finden Sie im Katalog "WISKA INDUSTRY".

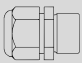

EMERGENCY-OFF push button

NOT- AUS-Taster



Voltage: 230 V
Protection class to EN 60 529: IP 56
Material: Brass/red brass
Equipment: Cable entries M 24 x 1,5/Z14
Kind of current: AC
Current intensity: 16 A
Buttons: - EMERGENCY-OFF Push button, 2-pole:
 AR = 1 closing contact, 1 breaking contact (10A)
 AA = 2 closing contacts
 RR = 2 breaking contacts
Variations: Third switching level

Spannung: 230 V
Schutzart gemäß EN 60 529: IP 56
Material: Messing/Rotguss
Ausstattung: Kabeleinführungen M 24 x 1,5/Z14
Spannungsart: AC
Stromstärke: 16 A
Taster: - NOT-AUS-Taster, 2-polig:
 AR = 1 Schließer, 1 Öffner (10A)
 AA = 2 Schließer
 RR = 2 Öffner
Varianten: Dritte Schaltebene

Type		
722/AR	○	1,0
722/2/AR	○	1,0
722/D/AR	○	1,0
722/AA	○	1,0
722/2/AA	○	1,0
722/D/AA	○	1,0
722/RR	○	1,0
722/2/RR	○	1,0
722/D/RR	○	1,0

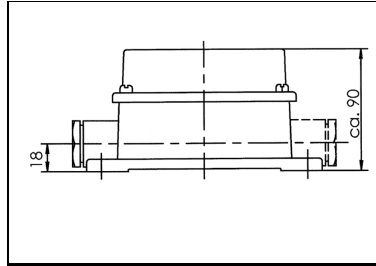
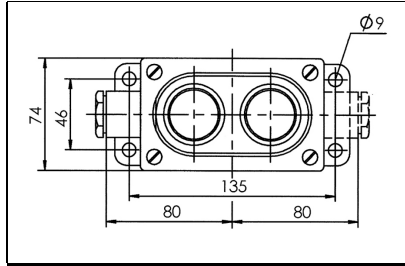
Spare parts / Accessories

Ersatzteile / Zubehör

Type	Description	Produktbeschreibung	
1823 AR	EMERGENCY-OFF push button interior, 1 closing contact, 1 breaking contact, Ø 22,5 mm, 2-pole, 16A	NOT-AUS Tastereinsatz, 1 Schließer und 1 Öffner, Ø 22,5 mm, 2-polig, 16A	1,0
1823 RR	EMERGENCY-OFF push button interior, 2 breaking contacts, Ø 22,5 mm, 2-pole, 16A	NOT-AUS Tastereinsatz, 2 Öffner, Ø 22,5 mm, 2-polig, 16A	1,0
1823 AA	EMERGENCY-OFF push button interior, 2 closing contacts, Ø 22,5 mm, 2-pole, 16A	NOT-AUS Tastereinsatz, 2 Schließer, Ø 22,5 mm, 2-polig, 16A	1,0

Push and signal buttons 2-gang

Drucktaster 2-fach



Voltage: 230 V

Protection class to EN 60 529: IP 56

Material: Brass/red brass

Equipment: Cable entries M 24 x 1,5/Z14

Terminals/Poles: 1- or 2-pole

Current intensity: 16 A

Buttons: - AR = Push button 10A, 1 closing contact, 1 breaking contact

Variations: - AA = Push button 10A, 2 closing contacts

- RR = Push button 10A, 2 breaking contacts

- Incandescent lamp 12 V

- Incandescent lamp 24 V

Example: 2720 + PB-R/AR + PBL-G/RR/230 =

- Push button red with 1 closing contact and 1 breaking contact

- Push button with light, green, 2 breaking contacts, glow lamp 230 V

Spannung: 230 V

Schutzart gemäß EN 60 529: IP 56

Material: Messing/Rotguss

Ausstattung: Kabeleinführungen M 24 x 1,5/Z14

Klemmen/Pole: 1- oder 2-polig

Stromstärke: 16 A

Taster: - AR = Drucktaster 10A, 1 Schließer, 1 Öffner

Varianten: - AA = Drucktaster 10A, 2 Schließer

- RR = Drucktaster 10A, 2 Öffner

- Glühlampe 12 V

- Glühlampe 24 V

Beispiel: 2720 + PB-R/AR + PBL-G/RR/230 =

- Drucktaster, rot, 1 Schließer und 1 Öffner

- Leuchttaster, grün, 2 Öffner, Glimmlampe 230 V

Type		
2720...		1,6
2720/D...		1,6

Spare parts / Accessories

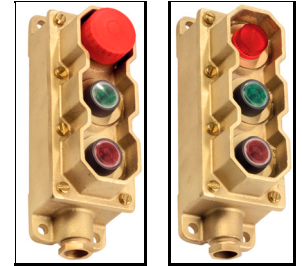
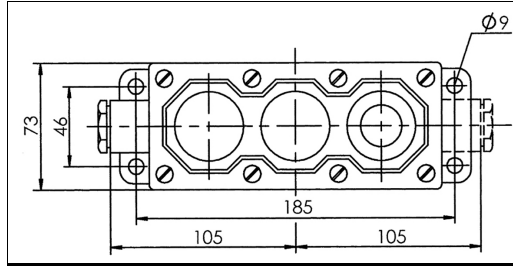
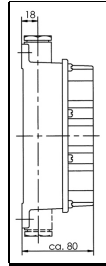
Ersatzteile / Zubehör

Type	Description	Produktbeschreibung	
PB-R	Push button, red	Drucktaster, rot	0,1
PB-G	Push button, green	Drucktaster, grün	0,1
PB-B	Push button, black	Drucktaster, schwarz	0,1
PBL-R	Push button with light, red	Leuchttaster, rot	0,1
PBL-G	Push button with light, green	Leuchttaster, grün	0,1
PBL-O	Push button with light, opal	Leuchttaster, opal	0,1
IL-R	Indication light, red	Meldeleuchte, rot	0,1
IL-G	Indication light, green	Meldeleuchte, grün	0,1
IL-O	Indication light, opal	Meldeleuchte, opal	0,1
EO-R	EMERGENCY-OFF Push button, red	NOT-AUS-Taster, rot	0,1

For the wide range of Cable glands and accessories for all applications please look at the catalogue "WISKA INDUSTRY"
Das umfangreiche Sortiment an Kabelverschraubungen und Zubehör für alle Einsatzbereiche finden Sie im Katalog "WISKA INDUSTRY".

Push and signal buttons 3-gang

Drucktaster 3-fach



Voltage: 230 V

Protection class to EN 60 529: IP 56

Material: Brass/red brass

Equipment: Cable entries M 24 x 1,5/Z14

Terminals/Poles: 1- or 2-pole

Current intensity: 16 A

Buttons: - AR = Push button 10A, 1 closing contact, 1 breaking contact

Variations: - AA = Push button 10A, 2 closing contacts

- RR = Push button 10A, 2 breaking contacts

- Incandescent lamp 12 V

- Incandescent lamp 24 V

Example: 3720 + PB-R/AR + PBL-G/RR/230 + IL-R/230 =

- Push button red with 1 closing contact and 1 breaking contact

- Push button with light, green, 2 breaking contacts, glow lamp 230 V

- Indication light, red, glow lamp 230 V

Spannung: 230 V

Schutzart gemäß EN 60 529: IP 56

Material: Messing/Rotguss

Ausstattung: Kabeleinführungen M 24 x 1,5/Z14

Klemmen/Pole: 1- oder 2-polig

Stromstärke: 16 A

Taster: - AR = Drucktaster 10A, 1 Schließer, 1 Öffner

Varianten: - AA = Drucktaster 10A, 2 Schließer

- RR = Drucktaster 10A, 2 Öffner

- Glühlampe 12 V

- Glühlampe 24 V

Beispiel: 3720 + PB-R/AR + PBL-G/RR/230 + IL-R/230 =

- Drucktaster, rot, 1 Schließer und 1 Öffner

- Leuchttaster, grün, 2 Öffner, Glimmlampe 230 V

- Meldeleuchte, rot, Glimmlampe 230 V

Type		
3720...		2,1
3720/D...		2,1

Spare parts / Accessories

Ersatzteile / Zubehör

Type	Description	Produktbeschreibung	
PB-R	Push button, red	Drucktaster, rot	0,1
PB-G	Push button, green	Drucktaster, grün	0,1
PB-B	Push button, black	Drucktaster, schwarz	0,1
PBL-R	Push button with light, red	Leuchttaster, rot	0,1
PBL-G	Push button with light, green	Leuchttaster, grün	0,1
PBL-O	Push button with light, opal	Leuchttaster, opal	0,1
IL-R	Indication light, red	Meldeleuchte, rot	0,1
IL-G	Indication light, green	Meldeleuchte, grün	0,1
IL-O	Indication light, opal	Meldeleuchte, opal	0,1
EO-R	EMERGENCY-OFF Push button, red	NOT-AUS-Taster, rot	0,1

For the wide range of Cable glands and accessories for all applications please look at the catalogue "WISKA INDUSTRY"
Das umfangreiche Sortiment an Kabelverschraubungen und Zubehör für alle Einsatzbereiche finden Sie im Katalog "WISKA INDUSTRY".