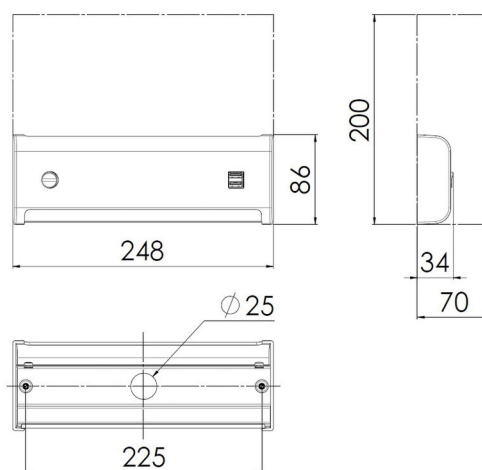


BERTH LIGHT WITH SWITCH, SLIM DESIGN,
IDEAL FOR PULLMAN BERTHS

Design	According to rules of maritime classification societies and relevant standards
Housing	Polycarbonate, black or white
Diffuser	Polycarbonate, opal
Switch	On/off switch
Specials	2 × USB (type A or C), 5V/2A
Mounting	2 mounting holes
Protection class	IP20
Light source	Linear LP LED module
Wattage	1 × 3 W LED
CCT (color)	3,000 K
Luminous flux	250 lm
CRI	≥ 80
Voltage	120–230 V AC
Frequency	50–60 Hz

PART NO.

Black with USB-A	5117001600-001
Black with USB-C	5117001600-009
Black without USB	5117001700-001
White with USB-A	5117001600-002
White with USB-C	5117001600-008
White without USB	5117001700-002



[mm]
maintenance area

Practical storage pocket

