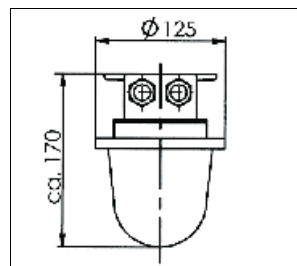
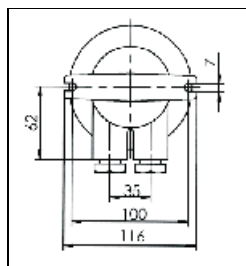


# WISKA MARITIME LIGHTING

## HNA-standard fixtures 1131/oS, brass/red brass, cylindrical glass globe

## HNA-Einheitsleuchten 1131/oS, Messing/Rotguss, Zylinderglas



**Protection class to EN 60 529:** IP 56

**Material:** - Casing: brass/red brass

- Globe: glass

**Lamp:** Incandescent lamp up to 100W/approx. 1.380lm (not included in delivery)

**Equipment:** - Glass globe with drop hole

- Without cast guard

- Above 75 Watt we recommend a branching box

**Variations:** - Coloured globes (opal, red, green, blue, yellow) with and without drop hole

- Clear globes without drop hole

**Schutzart gemäß EN 60 529:** IP 56

**Material:** - Gehäuse: Messing/Rotguss

- Abdeckung: Glas

**Leuchtmittel:** Glühlampe bis 100W/ca.1.380lm (nicht im Lieferumfang enthalten)







**Ausstattung:** - Klare Glasabdeckung mit Tropfloch

- Ohne Gusskorb

- Ab 75 Watt zusätzliche Leuchtenanschlussdose empfohlen

**Varianten:** - Farbige Abdeckungen mit und ohne Tropfloch (opal, rot, grün, blau, gelb)

- Klare Abdeckungen ohne Tropfloch

WISKA-No.	Type	Power	Voltage	Lampholder	Globe colour		
10013209	1131/oS/clear/mT/1974-1xZ14	100 W	230 V	E27	Clear	M24x1,5 Z 14 / 12-14,5mm	
10011657	1131/2/oS/clear/mT/1974-2xZ14	100 W	230 V	E27	Clear	M24x1,5 Z 14 / 12-14,5mm	
10012540	1131/oS/clear/mT/1975-1xZ14	100 W	230 V	B22d	Clear	M24x1,5 Z 14 / 12-14,5mm	
10012586	1131/D/oS/clear/mT/1975-2xZ14	100 W	230 V	B22d	Clear	M24x1,5 Z 14 / 12-14,5mm	

- For spare parts, refer to the contacts below

- Per i ricambi fare riferimento ai contatti sottostanti.

Für Ersatzteile wenden Sie sich bitte an die unten aufgeführten Ansprechpartner.