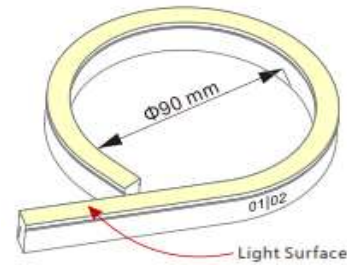
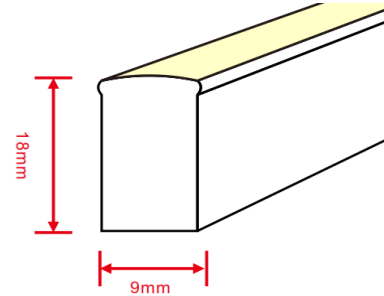


## CLF10B OPAL SERIES

**CLF10B is a top quality linear light** that allows the most flexible manipulations and produces superior homogenized illumination along its full length



**Minimum Bending Diameter**

<b>IP rating</b>	: IP20 ÷ IP68
<b>Power</b>	: 4,5W/m
<b>Voltage</b>	: 24 VDC
<b>Lumen output</b>	: 120lm/m
<b>Cuttable</b>	: every 8,33cm
<b>Lifespan</b>	: L70 35000h
<b>Temperature range</b>	: -20/+ 45°C

**Color range:** Red, Blue, Green, Amber and wide selection of CCT White  
2400K - 2700K - 3000K - 3500K - 4000K - 4500K- 5000K - 5700K -6500K

### Accessories

**Molded Connectors type C10A/... : w/cable (3m) IP68 for harsh environmental application**



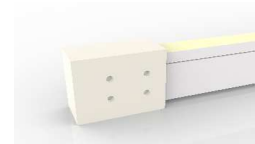
cable from end  
p/n C10A/1



cable from side  
p/n C10A/2



cable from bottom  
p/n C10A/3



end cap  
p/n C10A/EC

**Molded Connectors type C10B/... w/cable(3m) IP67 for outdoor application**



cable from end  
p/n C10B/1



cable from side  
p/n C10B/2



cable from bottom  
p/n C10B/3



end cap  
p/n C10B/EC

## CLF10B OPAL SERIES

### DIY Waterproof Connectors type C10C/... : w/cable (3m) IP67



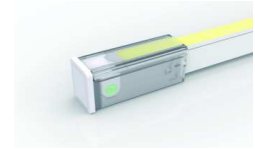
cable from end  
p/n C10C/1



cable from side  
p/n C10C/2

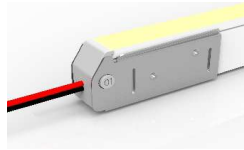


cable from bottom  
p/n C10C/3

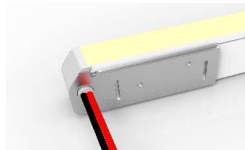


end cap  
p/n C10C/EC

### DIY Basic Connectors type C10D/... : w/wires (3m) IP20



wires from end  
p/n C10D/1



wires from side  
p/n C10D/2

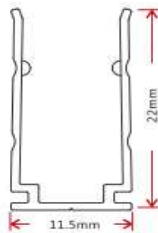
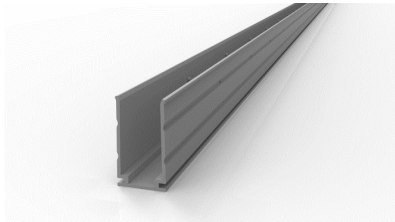


wires from bottom  
p/n C10D/3



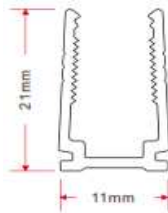
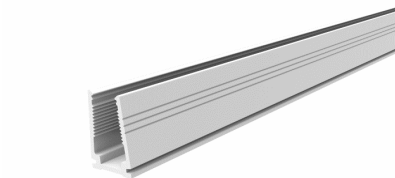
end cap  
p/n C10D/EC

### Mounting profiles



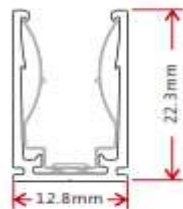
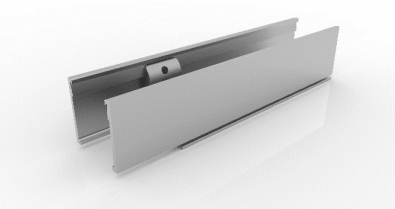
#### PAS10 Standard Aluminium Profile

35 mm	p/n PAS10/35
500mm	p/n PAS10/500
1000 mm	p/n PAS10/1000
2000 mm	p/n PAS10/2000



#### PPS10 Standard Plastic Profile

500 mm	p/n PPS10/500
1000 mm	p/n PPS10/1000
2000 mm	p/n PPS10/2000



#### PAA10 Self Locking Aluminium Profile

35 mm	p/n PAA10/35
500 mm	p/n PAA10/500
1000 mm	p/n PAA10/1000
2000 mm	p/n PAA10/2000

CLF10 is part of OPAL SERIES LED Stripes:

Different models , different lumen output up to 800 lm/m , vertical or horizontal bending, light beam angle up to 320°, special executions ,dimming option and additional accessories.

Please check on our web site the full range and/or contact us to find the best solution for your application.